



the **play** inspection company

Annual Inspection

Pointon Parish Council

Pointon Playing Field

Fen Road, Pointon, NG34 0LZ



API Associate



Unit 5, Glenmore Business Park, Blackhill Road, Poole, Dorset, BH16 6NL
t- 01202 590675 e- info@playinspections.co.uk

[www. playinspections .co.uk](http://www.playinspections.co.uk)

Inspection Scope for RPII Inspection Methodology

This document outlines the RPII scope for inspections undertaken by the Inspectors listed as Annual Inspectors on the RPII Register of Inspectors when undertaking Indoor Annual, Outdoor Annual, Outdoor Operational and Outdoor Routine inspections.

Inspections are undertaken with reference to the standards listed in this preamble only; where no date for the standard is given it will be the standard that is current at the time of inspection except where overlap periods are granted by the standards committee when standards are updated. The information contained in reports is provided to assist the owner/operator in fulfilling their responsibilities as detailed in the relevant standard. Other standards referenced within the listed standards do not form part of the inspection, unless they are also explicitly listed here.

The following standards are relevant to all installations of equipment that are publicly accessible to users; this includes public parks, pay and play parks, schools, nurseries, public houses, holiday parks, indoor play centres, farm parks etc. All equipment used or employed in publicly accessible areas should meet with the requirements of the relevant standards (listed below):

BS EN 1176 Parts 1, 2, 3, 4, 5, 6, 10 & 11 Playground equipment intended for permanent installation outdoors & indoors.

BS EN 1176 Part 7 - 'Guidance on Installation, Inspection, Maintenance and Operation' (this document gives guidance to the owners/operators of the facility on the installation, inspection, maintenance and operation of playground equipment, excluding ancillary items).

In the United Kingdom the National Foreword forms an important part to the understanding and implementation of the recommendations set out in this document. It clarifies the application of the document within the UK as best practice guidance, as the document has been used since its initial publication. Therefore, in the UK this standard (BS EN 1176 – Part 7) contains no requirements and needs to be read and implemented as guidance, with the use of the term 'shall' therefore becoming a recommendation, as in the term 'should'.

Domestic play equipment falls outside of the scope of BS EN 1176 and has its own standards (BS EN 71 series – Safety of Toys). Where domestic equipment can be identified this will be acknowledged in the report but any comments concerning compliance will follow the requirements and recommendations of BS EN 1176.

When water play items, including spray parks, are inspected any comments concerning compliance within the inspection will refer to BS EN 1176. We have not assessed these against the requirements of BS EN 17232 (Water play equipment and features).

Other equipment that is not clearly identified as unsupervised or domestic (natural play, self-build equipment etc.) will be assessed for compliance with the relevant standard listed below:

BS EN 15312 Free access multi-sports equipment
BS EN 14974 Skateparks
BS EN 16630 Permanently installed outdoor fitness equipment
BS EN 16899 Parkour equipment (plus RPII/API guidance notes)

Annual and Post Installation inspections will take into consideration compliance with these current standards, and defects related to wear and vandalism. Items not listed in the report have not been included in the inspection. The inspection will cover the playground equipment and the active area (that area which is obviously part of the playground), nominally up to three metres around, the fence line if closer, or other areas as agreed.

Operational inspections only take into consideration defects related to cleanliness, equipment ground clearances, ground surface finishes, exposed foundations, sharp edges, missing parts, excessive wear (of moving parts) structural integrity, wear and vandalism.

Routine visual inspections relate only to the most obvious defects such as broken or missing parts, litter, vandalism and issues created by severe weather conditions (the intention is to identify hazards created by storm damage).

All inspections are non-dismantling, non-destructive and do not include any structural, toxicology or impact assessments defined in the standard; however, the inspector will undertake a manual test for stability and if equipment fails under manual load, or any other hazard is identified as an unacceptable risk, the owner/operator will be notified as soon as practicably possible.

The inspector will access all reasonably accessible equipment and will assess all reasonably accessible parts above the standing surface. Where it is not possible to access parts of the equipment without employing an alternative means of access the report will record the action required by the owner/operator to ensure the continued safe use of the equipment.

Ancillary equipment will be assessed using the inspector's knowledge and experience of the standards named in this document. (Note: Ancillary items are not included in the specific equipment-type parts of the EN 1176 series; hence they are not assessed for compliance with EN 1176 series and are subject to a general safety assessment).

The owner/operator is responsible for the overall safety of the equipment and area.

The inspector will not undertake any of the following works unless specifically agreed in writing at the time of order:

Checking the depth and underlying structural integrity of any surface areas and/or carrying out any testing of the impact attenuating properties of any surfaces; the identification of any corrosion, rot or other deterioration in any apparatus or equipment other than by an external inspection; the inspection of any equipment (or part thereof) that is beneath the playing surface (loose-fill materials may be moved to expose foundations); tightening any bolts, hinges or other fixing devices on any apparatus or equipment; assessing or inspecting any electrical installations contained on any site and/or apparatus and/or equipment; assessing or inspecting any water supplies and/or water features and/or any associated computerised systems (including carrying out any programming); where planting or trees are mentioned in the report no assessments of toxicity, suitability or condition are undertaken – the owner/operator should have suitable inspections provided by a competent person.

The owner/operator should have a 'design risk assessment' provided by the manufacturer/designer of the area for the equipment and location in which the facility is installed.

The operator is responsible for managing risks of their provision and is required by law to carry out a 'suitable and sufficient assessment' of the risks associated with a site or activity. This inspection shall be considered as contributing to the operator's discharge of this responsibility.

The details contained within the report are a snapshot of the condition at the time of inspection only and subsequent events may affect the condition of the facility. Suggested remedial actions are based on the knowledge and experience of the inspector and/or that of the inspection company. The owner/operator should always seek the advice of the manufacturer or a competent person when undertaking repairs and/or modifications to equipment.

A full copy of the Play Inspection Company Ltd. Terms & Conditions is available on our website (www.playinspections.co.uk)

The operator is responsible for following the guidance of the relevant standards. The standards give guidance on the installation, inspection, maintenance and operation of the various types of facilities. The inspection guidance is listed in Table 1, with an indication of which parts will be included in an RPII Annual or Post-Installation Inspection. The relevant standards also contain additional parts which the operator should follow.

Inspection recommendations of relevant standards Refer to relevant standards for full text	Annual Main	RPII Annual/ Post Installation Inspection
6.1 d) Overall levels of safety of equipment (see note 1)	✓	✓ [1]
6.1 d) Overall levels of safety of foundations (see note 1)	✓	✓ [1]
6.1 d) Overall levels of safety of playing surfaces (see note 2)	✓	✓ [2]
6.1 d) Compliance with the relevant parts of the standard and or risk assessment (see note 3)	✓	✓ [3]
6.1 d) Effects of weather	✓	✓
6.1 d) Presence of rot, decay or corrosion (see note 1)	✓	✓ [1]
6.1 d) Assessment of repairs made or added or replaced components (see note 4)	✓	✓ [4]
6.1 d) Excavation or dismantling/additional measures	✓	✗
6.2.1 Assessment of glass reinforced plastics (see note 5)	✓	✓ [5]
6.2.1 Inspection of one post equipment (see note 1)	✓	✓ [1]
6.2.4 Undertaking the Operators inspection protocol	✓	✗

NB: The clause numbers in table 1 are taken from BS EN 1176 - Part 7:2020. The content is equally applicable to all other relevant standards listed herein. Playgrounds contain a range of equipment from different manufacturers and installed over a number of years; operators should implement any guidance provided by the manufacturer. Item specific detail is not readily available to RPII Playground Inspectors, whose report contributes to the operator's overall Annual Main Inspection as detailed in the relevant standards.

[1] A manual test only is undertaken for stability. Wear and instability are only detectable where readily apparent without dismantling or destruction and without the use of tools, excavation or specialist equipment. Rot and corrosion are tested or with a hammer and/or steel rod. Decay in timber may exist which can only be found with specialist equipment.

[2] Only the visible condition and dimensional compliance of surface extent is considered. Neither testing of impact attenuating properties nor measurement of the thickness of bound surfaces are undertaken on RPII annual inspections.

[3] The inspection assesses compliance where this can be tested on site using manual methods without dismantling, destruction and without the use of tools or specialist equipment.

[4] The operator should use manufacturer's recommended parts, or equivalent. We are unable to verify if such parts have been used, and any subsequent change in quality or performance.

[5] Visible glass fibres will be noted in reports. The operator is responsible for repairs or replacement.

Risk Assessment Matrix

			Scores in the report are multiplication factors of Likelihood x Severity					
			Severity>>					
Likelihood	Very High probability, if the situation is not addressed an accident is almost certain.	5	Very High	VL (5)	L (10)	M (15)	H (20)	VH (25)
	High probability an accident is probable without any added factor.	4	High	VL (4)	L (8)	M (12)	H (16)	H (20)
	Moderate probability an incident is foreseeable.	3	Moderate	VL (3)	L (6)	L (9)	M (12)	M (15)
	Some probability, requires a combination of factors to take place.	2	Low	VL (2)	VL (4)	L (6)	L (8)	L (10)
	No significant probability; lightning strike, freak accident.	1	Very Low	VL (1)	VL (2)	VL (3)	VL (4)	VL (5)
			Very Low	Low	Moderate	High	Very High	
			1	2	3	4	5	
			No injury likely e.g. damaged or soiled clothing, minor bruising, grazes	Minor injury, laceration or bruising requiring first aid only	Injury requiring medical intervention e.g. cuts requiring stitches	Serious injury including concussions or fracture of long bones	Severe injury involving a potential life changing injury or fatality	
			Severity>>					
<p>Note 1: The total risk scores included within our reports are a multiplication factor of the calculated Likelihood and Severity of each finding. Both Likelihood and Severity are given a number between 1 - 5 as shown on the matrix above and these two numbers are then multiplied together to give the total risk score that is shown against defects on the report. Total risk scores can be divided in both directions, i.e. a total risk score of 12 could be a Likelihood (3) x Severity (4) or Likelihood (4) x Severity (3).</p> <p>Note 2: When we inspect we only see a snapshot of the current condition of the equipment. It is the operators responsibility to ensure that there is a continuing level of maintenance to keep the equipment in good working order and the site fit for use.</p>								

Equipment has been assessed to the following standards where relevant:

- BS EN 1176 Parts 1-11 (Playground equipment and surfacing)
- BS EN 14974 (Facilities for users of roller sports equipment)
- BS EN 15312 (Free access multi-sports equipment)
- BS EN 16899 (Parkour Equipment)
- BS EN 16630 (Outdoor Fitness Equipment).



Pointon Playing Field

Inspection Ref: 2203240

Site Ref: 102355

Inspected: 23-October-2023 - 16:30 by John-Aris Hirst (RPII Annual Inspector)

Risk Assessment: 15 Moderate Risk



Location:

The site is partially overlooked by properties in the local community

Disabled Access:

Some accessible features; an area that presents difficulties to the majority of people with disabilities but in favourable circumstances and certainly in partnership can be accessed.



i 8 - Low Risk

Item: Site General
Manufacturer: Not Applicable
Surface Type: N/A
Item Quantity: 1
Equipment Compliance: N/A
Surface Area Compliance: N/A

Total Findings: 5



Finding 1

It is recommended that signage, with information including the site address, contact information for maintenance issues and emergency contact details are provided for the facility - Provide in accordance with the recommendations

Finding 2

Access to this area has been restricted by the owner / operator - Complete repairs or removal of affected elements

Finding 3

There is algae, silt or moss growth on the surface resulting in slippery conditions - Clean and treat appropriately

Finding 4

There is weed / vegetation growth on, between, or around the edges of the surfacing - Remove weed / vegetation growth

Finding 5

The use of hard or sharp elements as bird deterrents is not recommended - Remove the affected elements

i 6 - Low Risk

Item: Fence - Steel Mesh
Manufacturer: Not Identified
Surface Type: Grass
Item Quantity: 1
Equipment Compliance: N/A
Surface Area Compliance: N/A

Total Findings: 1



Finding 1

The adjacent foliage is overgrown - Cut back and maintain

i 8 - Low Risk

Item: Bench
Manufacturer: Not Identified
Surface Type: Concrete
Item Quantity: 1
Equipment Compliance: N/A
Surface Area Compliance: N/A



Total Findings: 1

Finding 1

There are trip hazards at the edges of the surface - Reinstate surrounding surface levels to remove the trip points

i 10 - Low Risk

Item: See Saw
Manufacturer: Wicksteed Playgrounds
Surface Type: Wet Pour
Item Quantity: 1
Equipment Compliance: No
Surface Area Compliance: Yes



Total Findings: 5

Finding 1

The seat has been damaged - Replace the seat

Finding 2

The paintwork on this item has been damaged or worn exposing the metal underneath which is rusting / corroding - Treat affected areas and repaint

Finding 3

There is no gaiter protection for accessible moving parts (possible shear trap) as recommended in BS EN 1176 Part 1; 4.2.6 Moving Parts - Monitor - No remedial work recommended

Finding 4

The pivot mechanism is showing signs of wear - Monitor for any further deterioration and replace as required

Finding 5

The surface has subsided in some areas - Monitor for any further deterioration and repair as required

i 8 - Low Risk

Item: 1 Bay 2 Seat (Cradle)
Manufacturer: Wicksteed Playgrounds
Surface Type: Wet Pour
Item Quantity: 1
Equipment Compliance: No
Surface Area Compliance: Yes



Total Findings: 8

Finding 1

The paintwork on this item has been damaged or worn exposing the metal underneath which is rusting / corroding - Treat affected areas and repaint

Finding 2

There is some wear to the shackles. - Monitor for any further deterioration and replace when 40% worn

Finding 3

The split pins are missing from the shackles - Insert split pins to secure the shackles

Finding 4

The chain links are worn in excess of 40% and require renewing - Replace worn chains

Finding 5

The swing seat frames are corroding - Monitor for any further deterioration and replace as required

Finding 6

The chain openings are in excess of the 8.6mm as recommended by BS EN 1176 - Monitor - No remedial work recommended

Finding 7

The seats are too close to the frame as defined in BS EN 1176 Part 2; this is a low risk failure and no remedial action is required - Monitor - No remedial work recommended

Finding 8

The frame has been damaged - Monitor for any further deterioration and replace as required

! 15 - Moderate Risk

Item: Carousel
Manufacturer: Wicksteed Playgrounds
Surface Type: Gravel
Item Quantity: 1
Equipment Compliance: No
Surface Area Compliance: No



Total Findings: 7

Finding 1

The safety surface has been removed, and in addition, the edge dimensions do not meet with the requirements of the current applicable standard (2.0m impact area required around the item - client notified) - Provide an appropriate safety surface and extend edging dimensions to comply

Finding 2

The distance between the underside of the roundabout platform and the playing surface is in excess of 110mm and contravenes the requirements of BS EN 1176 Part 5 which requires that the distance be maintained between 60mm-110mm - for the entire circumference of the roundabout - Replace the missing surface

Finding 3

There is algae or moss on the surface of the equipment - Clean and treat appropriately

Finding 4

There are areas or parts of the timber on the structure that have rotted around fixing points - Replace all affected timbers

Finding 5

There is/are finger entrapment/s in the structure and the item fails to meet the requirements of BS EN 1176 Part 1 4.2.7.6 Entrapment of fingers - Infill to remove the entrapments

Finding 6

The paintwork on this item has been damaged or worn exposing the metal underneath which is rusting / corroding - Treat affected areas and repaint

Finding 7

The bearing is showing signs of wear - Monitor for any further deterioration and replace as required



i 8 - Low Risk

Item: Free Standing Slide
Manufacturer: Wicksteed Playgrounds
Surface Type: Wet Pour
Item Quantity: 1
Equipment Compliance: No
Surface Area Compliance: No



Total Findings: 7

Finding 1

There is some minor damage to the surface - Monitor for any further deterioration and repair as required

Finding 3

There is/are finger entrapment/s in the framework and the item fails to meet the requirements of BS EN 1176 Part 1 4.2.7.6 Entrapment of fingers - Monitor - No remedial work recommended

Finding 5

The paintwork on this item has been damaged or worn exposing the metal underneath which is rusting / corroding - Treat affected areas and repaint

Finding 7

The surfacing dimensions are short and do not meet with the requirements of the current applicable standard - Monitor - no remedial action recommended

Finding 2

There are a number of dents in the slide surface - Monitor for any further deterioration and repair as required

Finding 4

The item fails to meet the requirements of BS EN 1176 Part 1 4.2.7.2 head and neck entrapment in the barriers and/or steps - Monitor - No remedial work recommended

Finding 6

There is algae or moss on the surface of the equipment - Clean and treat appropriately

! 12 - Moderate Risk

Item: 1 Bay 2 Seat (Flat)
Manufacturer: Wicksteed Playgrounds
Surface Type: Wet Pour
Item Quantity: 1
Equipment Compliance: No
Surface Area Compliance: No



Total Findings: 12

Finding 1

One of the lateral frame stabilisers is missing - Replace the missing structural components

Finding 2

There is moderate damage to the surface - Repair the damaged areas of surfacing

Finding 3

There are significant gaps (over 30mm) between the surface and the edging or between the joints in the surface; these are large enough for a small foot to enter - Repair surfacing

Finding 4

The fixings or components for this item were in excess of 2.5m above the standing surface and could not be fully accessed by the inspector. We have completed a visual inspection of the fixings from ground level but a maintenance inspection should be undertaken to assess the condition, security and wear of the components at intervals in accordance with the manufacturers recommendations. - Inspect in accordance with the manufacturers recommendations

Finding 5

The seat has minor damage or wear - Monitor for any further deterioration and replace as required

Finding 6

There are excessive chain tails provided, however a minimum of 2 additional links should always be provided with crucifix connectors - Cut back excess chain tails but ensure a minimum of 2 additional links remain through the crucifix

Finding 7

There is some wear to the shackles. - Monitor for any further deterioration and replace when 40% worn

Finding 8

There is some notable evidence of chain wear - Monitor for any further deterioration and replace when 40% worn

Finding 9

The chain openings are in excess of the 8.6mm as recommended by BS EN 1176 - Monitor - No remedial work recommended

Finding 10

The seats are too close to the frame as defined in BS EN 1176 Part 2; this is a low risk failure and no remedial action is required - Monitor - No remedial work recommended

Finding 11

The surfacing width under the seat/s is / are less than 875mm when measured from the centre of the seat outwards, and fails the requirements of BS EN 1176 Part 2 - Monitor - No remedial work recommended

Finding 12

The surfacing dimensions are short and do not meet with the requirements of the current applicable standard - Monitor - no remedial action recommended

Findings information

i 5 - Very Low Risk (Finding 1)

Item: Ancillary Items - Site General
Manufacturer: Not Applicable

Risk Level: V - Very Low Risk
Surface: N/A



Finding: It is recommended that signage, with information including the site address, contact information for maintenance issues and emergency contact details are provided for the facility

Action: Provide in accordance with the recommendations

i 0 - Risk Assessment not Undertaken (Finding 2)

Item: Ancillary Items - Site General
Manufacturer: Not Applicable

Risk Level: N - Risk Assessment not Undertaken
Surface: N/A



Finding: Access to this area has been restricted by the owner / operator

Action: Complete repairs or removal of affected elements

i 8 - Low Risk (Finding 3)

Item: Ancillary Items - Site General
Manufacturer: Not Applicable

Risk Level: L - Low Risk
Surface: N/A



Finding: There is algae, silt or moss growth on the surface resulting in slippery conditions

Action: Clean and treat appropriately

i 6 - Low Risk (Finding 4)

Item: Ancillary Items - Site General
Manufacturer: Not Applicable

Risk Level: L - Low Risk
Surface: N/A



Finding: There is weed / vegetation growth on, between, or around the edges of the surfacing
Action: Remove weed / vegetation growth

i 8 - Low Risk (Finding 5)

Item: Ancillary Items - Site General
Manufacturer: Not Applicable

Risk Level: L - Low Risk
Surface: N/A



Finding: The use of hard or sharp elements as bird deterrents is not recommended

Action: Remove the affected elements

i 6 - Low Risk (Finding 1)

Item: Fences - Fence - Steel Mesh
Manufacturer: Not Identified

Risk Level: L - Low Risk
Surface: Grass



Finding: The adjacent foliage is overgrown

Action: Cut back and maintain

i 8 - Low Risk (Finding 1)

Item: Ancillary Items - Bench
Manufacturer: Not Identified

Risk Level: L - Low Risk
Surface: Concrete



Finding: There are trip hazards at the edges of the surface

Action: Reinstate surrounding surface levels to remove the trip points

i 10 - Low Risk (Finding 1)

Item: Rocking Equipment - See Saw
Manufacturer: Wicksteed Playgrounds

Risk Level: L - Low Risk
Surface: Wet Pour



Finding: The seat has been damaged

Action: Replace the seat

6 - Low Risk (Finding 2)

Item: Rocking Equipment - See Saw
Manufacturer: Wicksteed Playgrounds

Risk Level: L - Low Risk
Surface: Wet Pour



Finding: The paintwork on this item has been damaged or worn exposing the metal underneath which is rusting / corroding

Action: Treat affected areas and repaint

5 - Very Low Risk (Finding 3)

Item: Rocking Equipment - See Saw
Manufacturer: Wicksteed Playgrounds

Risk Level: V - Very Low Risk
Surface: Wet Pour



Finding: There is no gaiter protection for accessible moving parts (possible shear trap) as recommended in BS EN 1176 Part 1; 4.2.6 Moving Parts

Action: Monitor - No remedial work recommended

i 6 - Low Risk (Finding 4)

Item:	Rocking Equipment - See Saw	Risk Level:	L - Low Risk
Manufacturer:	Wicksteed Playgrounds	Surface:	Wet Pour



Finding: The pivot mechanism is showing signs of wear	Action: Monitor for any further deterioration and replace as required
--	--

i 6 - Low Risk (Finding 5)

Item:	Rocking Equipment - See Saw	Risk Level:	L - Low Risk
Manufacturer:	Wicksteed Playgrounds	Surface:	Wet Pour



Finding: The surface has subsided in some areas	Action: Monitor for any further deterioration and repair as required
--	---

i 6 - Low Risk (Finding 1)

Item: Swings - 1 Bay 2 Seat (Cradle)
Manufacturer: Wicksteed Playgrounds

Risk Level: L - Low Risk
Surface: Wet Pour



Finding: The paintwork on this item has been damaged or worn exposing the metal underneath which is rusting / corroding

Action: Treat affected areas and repaint

i 6 - Low Risk (Finding 2)

Item: Swings - 1 Bay 2 Seat (Cradle)
Manufacturer: Wicksteed Playgrounds

Risk Level: L - Low Risk
Surface: Wet Pour



Finding: There is some wear to the shackles.

Action: Monitor for any further deterioration and replace when 40% worn

i 6 - Low Risk (Finding 3)

Item: Swings - 1 Bay 2 Seat (Cradle)
Manufacturer: Wicksteed Playgrounds

Risk Level: L - Low Risk
Surface: Wet Pour



Finding: The split pins are missing from the shackles

Action: Insert split pins to secure the shackles

i 8 - Low Risk (Finding 4)

Item: Swings - 1 Bay 2 Seat (Cradle)
Manufacturer: Wicksteed Playgrounds

Risk Level: L - Low Risk
Surface: Wet Pour



Finding: The chain links are worn in excess of 40% and require renewing

Action: Replace worn chains

i 6 - Low Risk (Finding 5)

Item: Swings - 1 Bay 2 Seat (Cradle)
Manufacturer: Wicksteed Playgrounds

Risk Level: L - Low Risk
Surface: Wet Pour



Finding: The swing seat frames are corroding

Action: Monitor for any further deterioration and replace as required

i 5 - Very Low Risk (Finding 6)

Item: Swings - 1 Bay 2 Seat (Cradle)
Manufacturer: Wicksteed Playgrounds

Risk Level: V - Very Low Risk
Surface: Wet Pour



Finding: The chain openings are in excess of the 8.6mm as recommended by BS EN 1176

Action: Monitor - No remedial work recommended

i 6 - Low Risk (Finding 7)

Item: Swings - 1 Bay 2 Seat (Cradle)
Manufacturer: Wicksteed Playgrounds

Risk Level: L - Low Risk
Surface: Wet Pour



Finding: The seats are too close to the frame as defined in BS EN 1176 Part 2; this is a low risk failure and no remedial action is required

Action: Monitor - No remedial work recommended

i 6 - Low Risk (Finding 8)

Item: Swings - 1 Bay 2 Seat (Cradle)
Manufacturer: Wicksteed Playgrounds

Risk Level: L - Low Risk
Surface: Wet Pour



Finding: The frame has been damaged

Action: Monitor for any further deterioration and replace as required

! 15 - Moderate Risk (Finding 1)

Item: Rotor Play - Carousel
Manufacturer: Wicksteed Playgrounds

Risk Level: M - Moderate Risk
Surface: Gravel



Finding: The safety surface has been removed, and in addition, the edge dimensions do not meet with the requirements of the current applicable standard (2.0m impact area required around the item - client notified)

Action: Provide an appropriate safety surface and extend edging dimensions to comply

i 10 - Low Risk (Finding 2)

Item: Rotor Play - Carousel
Manufacturer: Wicksteed Playgrounds

Risk Level: L - Low Risk
Surface: Gravel



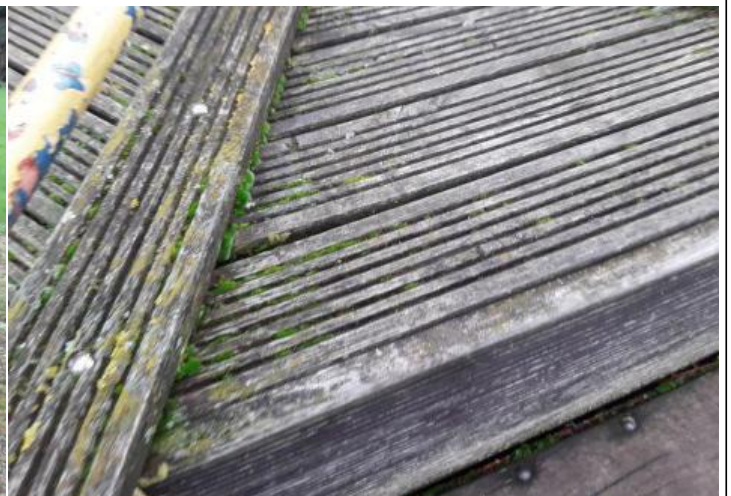
Finding: The distance between the underside of the roundabout platform and the playing surface is in excess of 110mm and contravenes the requirements of BS EN 1176 Part 5 which requires that the distance be maintained between 60mm-110mm - for the entire circumference of the roundabout

Action: Replace the missing surface

i 8 - Low Risk (Finding 3)

Item: Rotor Play - Carousel
Manufacturer: Wicksteed Playgrounds

Risk Level: L - Low Risk
Surface: Gravel



Finding: There is algae or moss on the surface of the equipment

Action: Clean and treat appropriately

i 9 - Low Risk (Finding 4)

Item: Rotor Play - Carousel
Manufacturer: Wicksteed Playgrounds

Risk Level: L - Low Risk
Surface: Gravel



Finding: There are areas or parts of the timber on the structure that have rotted around fixing points

Action: Replace all affected timbers

i 10 - Low Risk (Finding 5)

Item: Rotor Play - Carousel
Manufacturer: Wicksteed Playgrounds

Risk Level: L - Low Risk
Surface: Gravel



Finding: There is/are finger entrapment/s in the structure and the item fails to meet the requirements of BS EN 1176 Part 1 4.2.7.6 Entrapment of fingers

Action: Infill to remove the entrapments

i 6 - Low Risk (Finding 6)

Item: Rotor Play - Carousel
Manufacturer: Wicksteed Playgrounds

Risk Level: L - Low Risk
Surface: Gravel



Finding: The paintwork on this item has been damaged or worn exposing the metal underneath which is rusting / corroding

Action: Treat affected areas and repaint

i 6 - Low Risk (Finding 7)

Item: Rotor Play - Carousel
Manufacturer: Wicksteed Playgrounds

Risk Level: L - Low Risk
Surface: Gravel



Finding: The bearing is showing signs of wear

Action: Monitor for any further deterioration and replace as required

i 4 - Very Low Risk (Finding 1)

Item: Other - Free Standing Slide
Manufacturer: Wicksteed Playgrounds

Risk Level: V - Very Low Risk
Surface: Wet Pour



Finding: There is some minor damage to the surface

Action: Monitor for any further deterioration and repair as required

i 4 - Very Low Risk (Finding 2)

Item: Other - Free Standing Slide
Manufacturer: Wicksteed Playgrounds

Risk Level: V - Very Low Risk
Surface: Wet Pour



Finding: There are a number of dents in the slide surface

Action: Monitor for any further deterioration and repair as required

i 5 - Very Low Risk (Finding 3)

Item: Other - Free Standing Slide
Manufacturer: Wicksteed Playgrounds

Risk Level: V - Very Low Risk
Surface: Wet Pour



Finding: There is/are finger entrapment/s in the framework and the item fails to meet the requirements of BS EN 1176 Part 1 4.2.7.6 Entrapment of fingers

Action: Monitor - No remedial work recommended

i 5 - Very Low Risk (Finding 4)

Item: Other - Free Standing Slide
Manufacturer: Wicksteed Playgrounds

Risk Level: V - Very Low Risk
Surface: Wet Pour



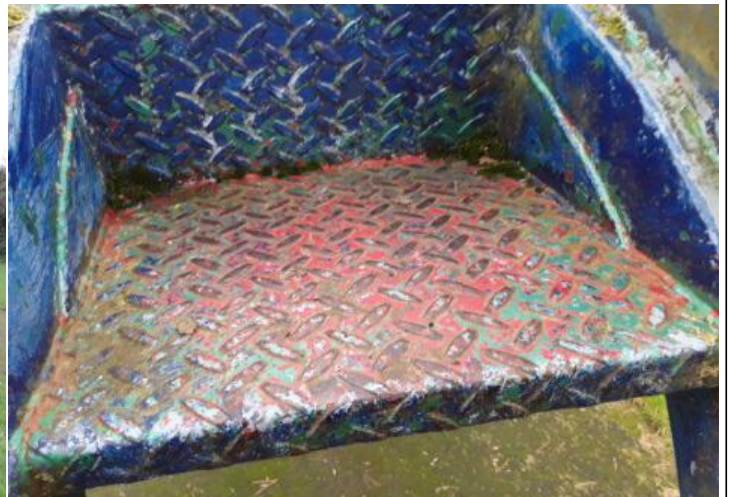
Finding: The item fails to meet the requirements of BS EN 1176 Part 1 4.2.7.2 head and neck entrapment in the barriers and/or steps

Action: Monitor - No remedial work recommended

i 6 - Low Risk (Finding 5)

Item: Other - Free Standing Slide
Manufacturer: Wicksteed Playgrounds

Risk Level: L - Low Risk
Surface: Wet Pour



Finding: The paintwork on this item has been damaged or worn exposing the metal underneath which is rusting / corroding

Action: Treat affected areas and repaint

i 8 - Low Risk (Finding 6)

Item: Other - Free Standing Slide
Manufacturer: Wicksteed Playgrounds

Risk Level: L - Low Risk
Surface: Wet Pour



Finding: There is algae or moss on the surface of the equipment

Action: Clean and treat appropriately

i 5 - Very Low Risk (Finding 7)

Item: Other - Free Standing Slide
Manufacturer: Wicksteed Playgrounds

Risk Level: V - Very Low Risk
Surface: Wet Pour



Finding: The surfacing dimensions are short and do not meet with the requirements of the current applicable standard

Action: Monitor - no remedial action recommended

! 12 - Moderate Risk (Finding 1)

Item: Swings - 1 Bay 2 Seat (Flat)
Manufacturer: Wicksteed Playgrounds

Risk Level: M - Moderate Risk
Surface: Wet Pour



Finding: One of the lateral frame stabilisers is missing

Action: Replace the missing structural components

i 10 - Low Risk (Finding 2)

Item: Swings - 1 Bay 2 Seat (Flat)
Manufacturer: Wicksteed Playgrounds

Risk Level: L - Low Risk
Surface: Wet Pour



Finding: There is moderate damage to the surface

Action: Repair the damaged areas of surfacing

i 9 - Low Risk (Finding 3)

Item: Swings - 1 Bay 2 Seat (Flat)
Manufacturer: Wicksteed Playgrounds

Risk Level: L - Low Risk
Surface: Wet Pour



Finding: There are significant gaps (over 30mm) between the surface and the edging or between the joints in the surface; these are large enough for a small foot to enter

Action: Repair surfacing

i 0 - Risk Assessment not Undertaken (Finding 4)

Item: Swings - 1 Bay 2 Seat (Flat)
Manufacturer: Wicksteed Playgrounds

Risk Level: N - Risk Assessment not Undertaken
Surface: Wet Pour



Finding: The fixings or components for this item were in excess of 2.5m above the standing surface and could not be fully accessed by the inspector. We have completed a visual inspection of the fixings from ground level but a maintenance inspection should be undertaken to assess the condition, security and wear of the components at intervals in accordance with the manufacturers recommendations.

Action: Inspect in accordance with the manufacturers recommendations

i 6 - Low Risk (Finding 5)

Item: Swings - 1 Bay 2 Seat (Flat)
Manufacturer: Wicksteed Playgrounds

Risk Level: L - Low Risk
Surface: Wet Pour



Finding: The seat has minor damage or wear

Action: Monitor for any further deterioration and replace as required

i 8 - Low Risk (Finding 6)

Item: Swings - 1 Bay 2 Seat (Flat)
Manufacturer: Wicksteed Playgrounds

Risk Level: L - Low Risk
Surface: Wet Pour



Finding: There are excessive chain tails provided, however a minimum of 2 additional links should always be provided with crucifix connectors

Action: Cut back excess chain tails but ensure a minimum of 2 additional links remain through the crucifix

i 6 - Low Risk (Finding 7)

Item: Swings - 1 Bay 2 Seat (Flat)
Manufacturer: Wicksteed Playgrounds

Risk Level: L - Low Risk
Surface: Wet Pour



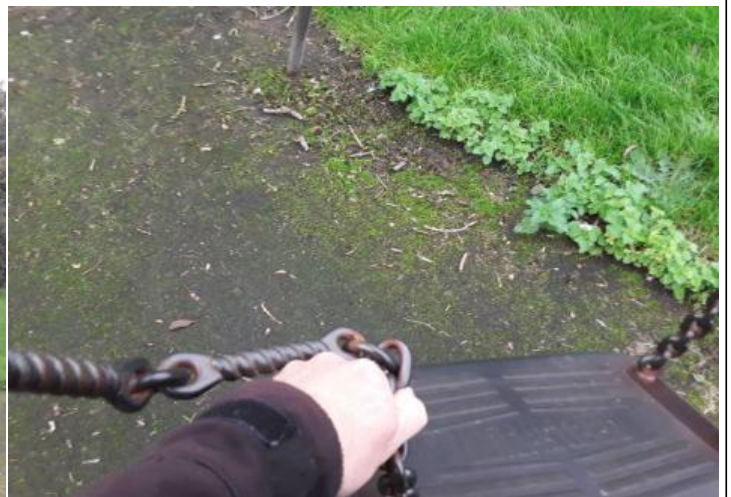
Finding: There is some wear to the shackles.

Action: Monitor for any further deterioration and replace when 40% worn

i 6 - Low Risk (Finding 8)

Item: Swings - 1 Bay 2 Seat (Flat)
Manufacturer: Wicksteed Playgrounds

Risk Level: L - Low Risk
Surface: Wet Pour



Finding: There is some notable evidence of chain wear

Action: Monitor for any further deterioration and replace when 40% worn

i 5 - Very Low Risk (Finding 9)

Item: Swings - 1 Bay 2 Seat (Flat)
Manufacturer: Wicksteed Playgrounds

Risk Level: V - Very Low Risk
Surface: Wet Pour



Finding: The chain openings are in excess of the 8.6mm as recommended by BS EN 1176
Action: Monitor - No remedial work recommended

i 8 - Low Risk (Finding 10)

Item: Swings - 1 Bay 2 Seat (Flat)
Manufacturer: Wicksteed Playgrounds

Risk Level: L - Low Risk
Surface: Wet Pour



Finding: The seats are too close to the frame as defined in BS EN 1176 Part 2; this is a low risk failure and no remedial action is required
Action: Monitor - No remedial work recommended

i 5 - Very Low Risk (Finding 11)

Item: Swings - 1 Bay 2 Seat (Flat)
Manufacturer: Wicksteed Playgrounds

Risk Level: V - Very Low Risk
Surface: Wet Pour



Finding: The surfacing width under the seat/s is / are less than 875mm when measured from the centre of the seat outwards, and fails the requirements of BS EN 1176 Part 2

Action: Monitor - No remedial work recommended

i 5 - Very Low Risk (Finding 12)

Item: Swings - 1 Bay 2 Seat (Flat)
Manufacturer: Wicksteed Playgrounds

Risk Level: V - Very Low Risk
Surface: Wet Pour



Finding: The surfacing dimensions are short and do not meet with the requirements of the current applicable standard

Action: Monitor - no remedial action recommended